

LINKTERAROBOTICS



RPA



**ROBOTIC  
PROCESS  
AUTOMATION**



# DISCOVER LINKTERA

## ALL ABOUT DIGITAL TRANSFORMATION

Turkey's Leading Digital Transformation, Consulting and System Integrator Company.



250+ professionals with **Strong Consulting, Project Management, Technology and System Integration** experience and technical.



High-end local and global market experience managing **100+** projects every year. **SAS, UiPath and Denodo's** largest business partner in the region and partnerships of **Murex**.



End-to-end Project management and delivery with the skills of **Technology Integration, Process Architecture Design and System Application**.



In-house innovation, start-up culture incentive, **Linktera Studio** UX/UI Design and Development Services with **Linktera LABS**.



Transferring current knowledge and work assets to the MENA Region in Office of Dubai, Qatar and USA.





# Your digital transformation with RPA is faster, more reliable and easier!

Welcome to the world of the future with Robotic Process Automation (RPA). Keep scrolling and get to know digital transformation better...

**We are certified UiPath Service Network (USN) Partner and we demonstrate our expertise and commitment to providing high-quality UiPath services to clients.**



**UiPath Certified**  
PROFESSIONAL SERVICES

PLATINUM  
**UiPath Partner**





MANUAL

Processes

RPA

Robotic Process Automation

# ‘Why would you choose Linktera?’

**Because  
We are the Forefront of  
automation technology  
and innovation**

We have a deep understanding of how to design and implement RPA solutions that meet the unique needs and requirements of our clients, as well as a track record of successful RPA deployments including:





## 1. Expertise and experience

---

Linktera is a UiPath Diamond Partner, operating in more than 20 countries around the world. Our RPA team has delivered 1000+ RPA projects in various industries, with the help of Linktera RPA process library that contains pre-built automations for HR, procurement, invoicing, logistics and many more. Over time, we reduced project delivery time by 30% and increased ROI from automation projects by 35%. We are a fully dedicated automation company with a proven record of success in delivering high-quality RPA solutions. As of 2022, Linktera is in the elite list of UiPath's enhanced enabled partners.



## 2. Tailored solutions

---

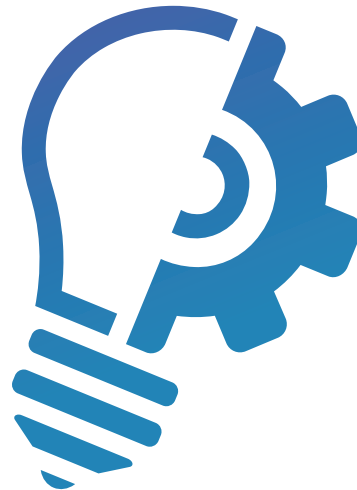
We enhance our RPA deliveries with tailor-made AI solutions in coordination with our data analytics and process excellence teams. Our holistic approach for automation is topped by RPA 2.0™, where our process excellence and automation teams provide a 3D analysis of the company's automation ecosystem: Process heatmap, automation operating model and technology usage.



### 3. Innovation

---

As an enhanced enabled UiPath partner, our automation team is trained on and experience with the latest technologies including intelligent document processing, process mining, test automation and conversational AI.



### 4. Support and training

---

Linktera provides ongoing support and training to its clients to help ensure that their RPA solutions are working effectively and efficiently. We have access to specialized training and support from UiPath, as well as early access to UiPath's new technology and product updates.



# Our Products

## Linktera Automation Dashboard (LAD)

Linktera Automation Dashboard (LAD) is monitoring tool that provides extensive content that highlights the process automation improvements made by businesses as well as the effects of automation on costs and labor. Companies can rapidly acquire very valuable information such as workforce gain, robot utilization rates, return on automation investment, and distribution of processes among departments, supplied by automation, with the help of the many indicators and visuals.



## Linktera Intelligent Scheduler (LIS)

Linktera Intelligent Scheduler (LIS) is a software tool that uses advanced algorithms and artificial intelligence to automate the scheduling process and optimize resource utilization. The tool can take into account factors such as job priorities, resource availability, and task dependencies, to determine the best time and resources to execute each job.







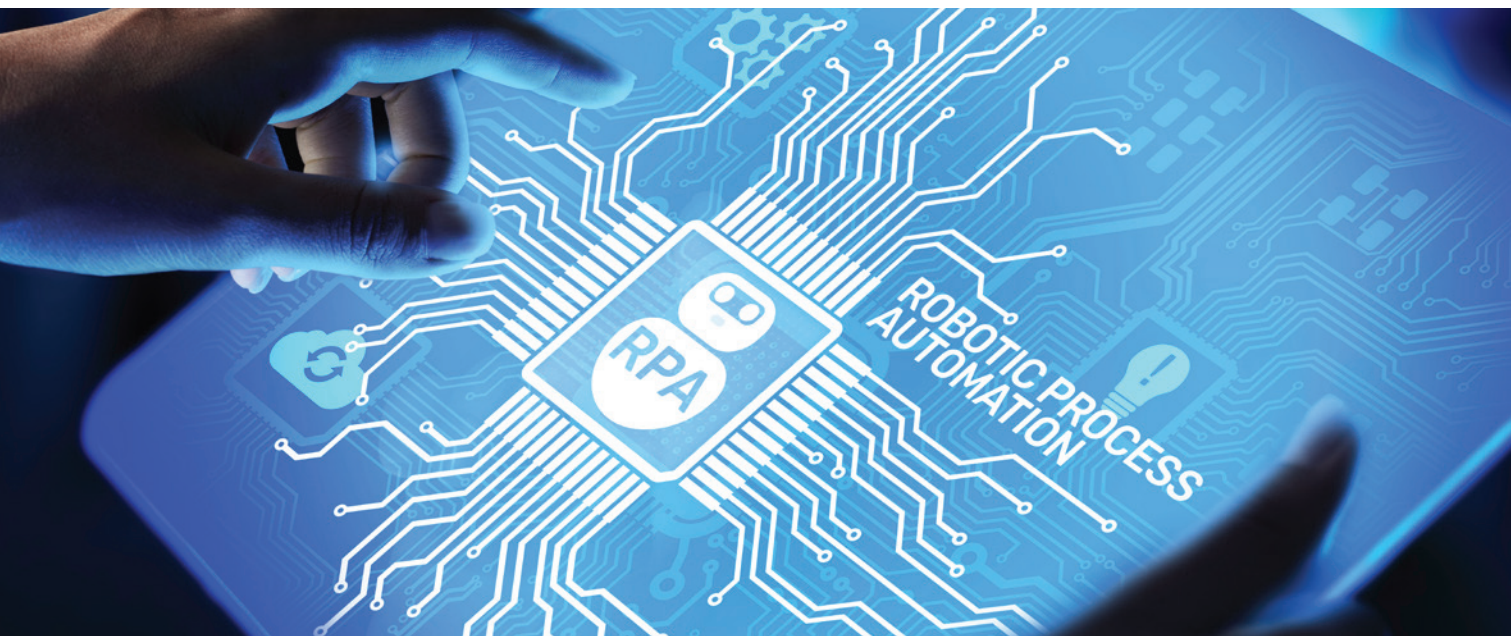
## Linktera Barcode Reader (LBAR)

LBAR reads and processes any barcode, QR code, and data matrix with extreme precision using AI technology. Simply snap a picture of the barcode or any type of QR Code and submit it to LBAR; it will be processed in a matter of milliseconds.



## Linktera Mobile Device Farm (LMDF)

Linktera Mobile Device farm is a cloud-based service directly integrated with UiPath Test Suite that provides access to a large number of real mobile devices for testing mobile applications. The mobile devices in the farm are hosted remotely in a data center and can be accessed by developers and testers over the internet.





# Digital Transformation for your work...

Robotic Process Automation (RPA) is one of the evolving branches of digital transformation. RPA is automation software with artificial intelligence and machine learning capabilities.



Saving  
**50.000**  
**Hours**  
per Year



**%0**  
Error



**40 - 60 %**  
Cost  
Reduction



**%85**  
Reduction in  
Processing Times



60 working days  
per year and  
budget savings





# Easier and Faster

Technology has transformed throughout the years, lots of new tools, applications and devices became indispensable elements in our daily life. These inventions contributed to our lives by making it easier and faster. Modern technologies opened up a chance for people to communicate and manage the work in a more convenient way. Robotic Process Automation (RPA) is the hot topics in today's world.





The benefits of RPA have an essential role in business. However, RPA has limitations. It's not suitable for automating every type of task and many companies need additional support. Even so, RPA can be foundational to your company's overall strategy.

# 7 IS NOT JUST A NUMBER

Here is the seven areas in which these tools can create cost savings and increase employee engagement.

**FINANCE**

**CUSTOMER SERVICE**

**SHARED SERVICE**

**DATA MANAGEMENT**

**HUMAN RESOURCES**

**INFORMATION TECHNOLOGY**

**SALES & MARKETING**





# RPA Trip

As a UiPath Diamond Partner , We support our customers in the following steps during their RPA journey

- Day free POC where requirements are met
- Determination of RPA products and consultancy packages suitable for our customers
- Bidding and Contract Process
- Determination of the processes to be developed and development of the first 2 processes
- Execution of the customer RPA launch
- Realization of a free RPA Workshop with customer employees
- Continuing the development of the customer's RPA processes

A detailed, metallic robotic hand is shown in the lower-left quadrant, with its index finger pointing towards the right. The hand is rendered in shades of blue and grey, with visible joints and mechanical details. The background features a dark blue, futuristic interface with glowing lines and circular elements, suggesting a digital or data-driven environment.

## START EARNING TODAY...

Fast and effective management of your digital transformation requests. Call us now to start managing your data in a fast and efficient way and let's shape the future of your business together.





---

# References







# TRANSFORM YOUR FUTURE

## LINKTERA

**Phone Number** +90 216 290 2615

### **Head Office**

Vogue Business Center, Küçükbakkalköy mah.  
Merdivenköy Yolu Cad. Rüya sok. No.12, Kat 18  
34746 İstanbul-Ataşehir

### **Linktera Robotics**

San Jose, CA , 99 S Almaden Blvd Suite 600

### **R&D Office**

TUBİTAK Gebze Yerleşkesi, Teknoloji Geliştirme Bölgesi  
Kuluçka Merkezi No. 1/4, Gebze / Kocaeli

[www.linktera.com](http://www.linktera.com)  
[info@linktera.com](mailto:info@linktera.com)  
[www.linkterarobotics.com](http://www.linkterarobotics.com)

### **Innovation Center**

Yıldız Teknik Üniversitesi Davutpaşa  
Kampüsü Teknoloji Geliştirme Bölgesi,  
B-2 Blok / 406 Esenler / İstanbul

### **Linktera Middle East FZE**

One Central, The Offices No. 1, Office  
No. 103 - 104 PO Box 9821 Dubai, UAE